

LEXUS

NX

NEW ZEALAND SPECIFICATIONS | NX300h / NX200t



EXTERIOR & INTERIOR COLOURS

A palette of colours, from the bold and luminous to nuanced and sophisticated, lets you express your individuality.



Sonic Quartz | 085



Basalt Mica | 1H9



Platinum Silver | 1J4



Titanium | 1J7



Onyx | 212



Starlight Black | 217



Burgundy | 3R1



Volcanic Bronze | 4V3 LIMITED ONLY



Ultrasonic Blue | 8U1 F SPORT | AVAILABLE FOR OTHER MODELS ON FIRM DEALER ORDER



Meteor | 8W3 LIMITED ONLY

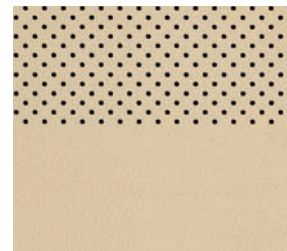
SEATING MATERIAL

COLOUR	NULUXE TRIM	F SPORT LEATHER	LIMITED LEATHER
03 White Ochre	Dark Film	N/A	Shimamoku or Bamboo
22 Black	Silver Film	N/A	Shimamoku or Bamboo
30 Garnet	Silver Film	N/A	Shimamoku
40 Saddle Tan	N/A	N/A	Shimamoku
53 Topaz Brown	Dark Film	N/A	N/A
92 F Sport Black	N/A	F Sport Trim	N/A
94 Black/Dark Rose Accents	N/A	F Sport Trim	N/A
95 Dark Rose/Black Accents	N/A	F Sport Film	N/A

NULUXE TRIM



22 Black



03 White Ochre

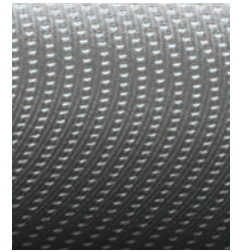


53 Topaz Brown

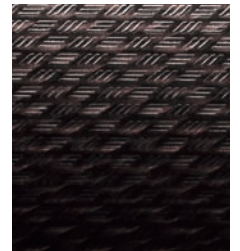


30 Garnet

TRIM



Silver Trim



Dark Trim



2WD/AWD 18-inch aluminum wheels

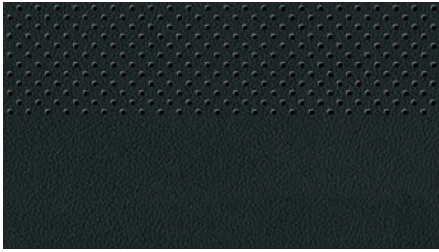


F Sport 18-inch aluminum wheels



Limited 18-inch aluminum wheels

F SPORT LEATHER



92 Black (F SPORT package)



94/95 Dark Rose (F SPORT package)

TRIM



F Sport Metal Trim

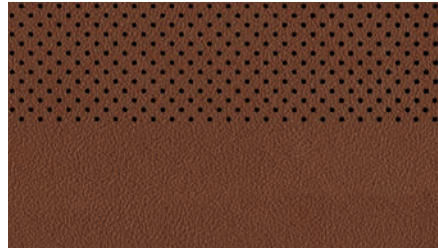
LIMITED LEATHER



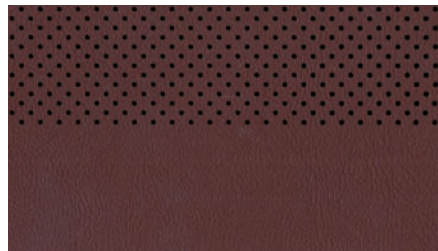
22 Black



03 White Ochre



53 Saddle Tan

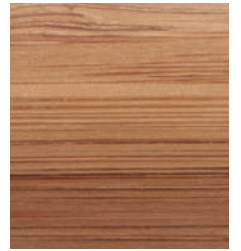


30 Garnet

TRIM



Shimamoku



Bamboo (Matte finish)

MAIN FEATURES NX300h/NX200t

		NX300h			NX200t			
		2WD	AWD F SPORT	AWD LIMITED	2WD	AWD	AWD F SPORT	AWD LIMITED
EXTERIOR	LED low beam/halogen high beam headlights; auto-leveling system; LED Daytime Running Light; LED front fog lights; wide-angle cornering lights; auto lights off system	•			•	•		
	LED 3-eye projector-type headlights; auto-leveling system; LED Daytime Running Light; LED front fog lights; wide-angle cornering lights; auto lights off system; Automatic High Beam System (AHB)		•	•			•	•
	Tinted acoustic windshield glass; front door water repellent tinted glass; rear door, side glass and rear hatch privacy glass - all with UV reduction	•	•	•	•	•	•	•
	Automatic anti-glare heated exterior mirrors with LED side turn signal light, Blind Spot Monitor (BSM), power folding, interlink with reverse gear and wide view		•	•			•	•
	F Sport front bumper, front mesh grille, front fender emblems and aluminum wheels		•				•	
	Power moonroof			•				•
INTERIOR	4.2-inch colour Thin Film Transistor (TFT) multi-information display; analogue clock	•	•	•	•	•	•	•
	NuLuxe trim 8-way power adjustable heated driver and front passenger seats, 60/40 manual folding rear seat; stainless steel scuff plates	•			•	•		
	F Sport leather 8-way power adjustable driver and front passenger seats, driver's seat 3 position memory function; heated front seats with ventilation, aluminium pedals and scuff plates; 60/40 manual folding rear seat.		•				•	
	Leather 8-way power adjustable driver and front passenger seats, driver's seat 3 position memory function; heated front seats with ventilation, stainless steel scuff plates; power folding rear seats			•				•
	Center console box; vanity mirrors and lights (front seats); front and outer rear seat cupholders; front and rear door bottle holders	•	•	•	•	•	•	•
	Auto air conditioning system; independent temperature controls for front seats, clean air filter with pollen and odour removal function	•	•	•	•	•	•	•
OPERATION	Smart key system with remote central door locking with panic function; remote rear door release function	•	•	•	•	•	•	•
	Alarm system with horn and intrusion sensor (alarm siren for F Sport and Limited); immobiliser	•	•	•	•	•	•	•
	Power tilt and telescopic steering column	•	•	•	•	•	•	•
	Steering wheel controls for audio, phone, voice, multi-information display; cruise control stalk; gear paddles	•	•	•	•	•	•	•
	Hybrid Sequential Shift Matic	•	•	•				
	Multi-mode Automatic Transmission				•	•	•	•
	Cruise control	•			•	•		
	All-speed Dynamic Radar Cruise Control (DRCC)		•	•			•	•
	Wireless charger for smart phone (Qi compatible only)		•	•			•	•
	Front and rear parking assist-sensors		•	•			•	•
	Reversing camera	•			•	•		
Reversing camera (Panoramic view monitor) and Blind Spot Monitor (BSM)		•	•			•	•	
Power back door; opening angle adjustment	•	•	•	•	•	•	•	
NAVIGATION AND AUDIO	Pioneer Premium Sound System with 7-inch display audio; AM/FM radio, in-dash DVD player, 10 speakers, MP3 and WMA play compatible, DSP (Digital Signal Processor); Bluetooth function; hands-free calling, wireless connection with AV-profile compliant player; 2 USB/mini-jack; Remote Touch Interface-Lexus Navigation System	•			•	•		
	Mark Levinson Premium Surround Sound System with 7-inch EMV (Electro Multi-Vision) display audio; AM/FM radio, in-dash DVD player, 14 speakers, MP3 and WMA play compatible, DSP, Auto Volume System; Bluetooth function; hands-free calling, wireless connection with AV-profile compliant player; 2 USB ports/mini-jack; Remote Touch Interface-Lexus Navigation System		•	•			•	•
SAFETY	Anti-lock Brake System (ABS) with Electronic Brake force Distribution (EBD), Brake Assist system (BA), Vehicle Stability Control (VSC) and Hill-start Assist Control (HAC)	•	•	•	•	•	•	•
	Traction Control System (TRC) and Vehicle Stability Control (VSC)	•	•	•	•	•	•	•
	Driver and passenger dual stage front, driver and passenger seat side and front and rear curtain shield airbags	•	•	•	•	•	•	•
	Pre-crash safety system; Blind Spot Monitor System (BSM); Lane Departure Alert (LDA) with steering wheel control; Rear Cross Traffic Alert (RCTA)		•	•			•	•
	3-point ELR seatbelts on all seats with pretensioners and force limiters for front seats; Whiplash Injury Lessening (WIL) front seats	•	•	•	•	•	•	•
	ISOFIX compliant child seat anchor points and top tether anchors on outer rear seats	•	•	•	•	•	•	•
	Tyre inflation pressure warning system	•	•	•	•	•	•	•
OPT	Pre-crash safety system; All-speed Dynamic Radar Cruise Control (DRCC)	•			•	•		

SPECIFICATIONS NX300h/NX200t

DIMENSIONS & WEIGHT

Overall length:	4630mm
Overall width:	1845mm (mirrors folded) 2130 (mirrors out)
Overall height:	1630mm
Wheelbase:	2660mm
Tread:	Front - 1580mm, 1570mm F Sport Rear - 1580mm, 1570mm F Sport
Curb weight:	1740-1835kg NX300h 2WD 1800-1895kg NX300h AWD 1700-1790kg NX200t 2WD 1755-1860kg NX200t AWD
Gross vehicle weight:	2325kg NX300h 2WD 2385kg NX300h AWD 2280kg NX200t 2WD 2350kg NX200t AWD
Towing capacity:	not rated NX300h 2WD/AWD
Towing capacity braked:	1500kg NX300h F Sport/Limited/NX200t
Towing capacity unbraked:	750kg NX300h F Sport/Limited/NX200t

CHASSIS

Suspension:	Front - MacPherson strut type Rear - Double wishbone type, coil springs, gas-filled shock absorbers, stabilizer bar
Steering system:	Rack and pinion; EPS (Electric Power Steering)
Brakes:	Front - 328mm ventilated discs Rear - 281mm discs
Minimum turning radius (Tyres):	5.7m
Fuel tank capacity:	56 liters NX300h, 60 liters NX200t
Tyres:	225/60R18 Standard & Limited 235/55R18 F Sport

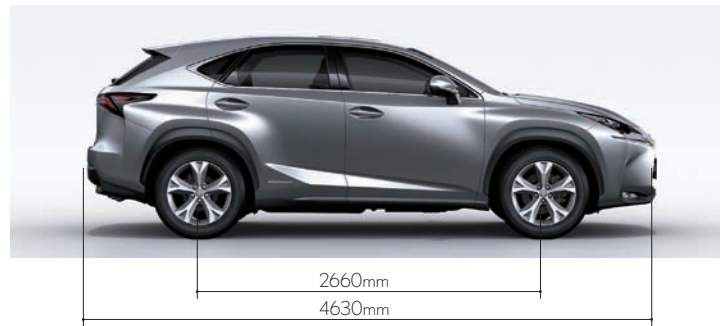


ENGINE NX300h

Type:	2.5-liter, 4-cyl. in-line Twin Cam 16-valve (2AR-FXE, unleaded)
Piston displacement:	2494cc
Max. output:	114kW @ 5700rpm
Max. torque:	210Nm @ 4200-4400rpm
Fuel system:	Electronic Fuel Injection
Fuel consumption:	5.6L/100km 2WD 5.7L/100km AWD
CO ₂ emissions:	131g/km 2WD 133g/km AWD
Battery type:	Sealed Ni-MH (Nickel-Metal Hydride)
Total system output:	145kW (Petrol Engine + LHD)

ENGINE NX200t

Type:	2.0-liter, 4-cyl. in-line Twin Cam 16-valve, turbocharger (8AR-FTS, unleaded)
Piston displacement:	1998cc
Max. output:	175kW @ 4800-5600rpm
Max. torque:	350Nm @ 1650-4000rpm
Fuel system:	D-4ST (Direct-injection 4-stroke Superior-version with Turbo)
Fuel consumption:	7.7L/100km 2WD 7.9L/100km AWD
CO ₂ emissions:	178g/km 2WD 184g/km AWD



*1 E-Four (AWD) models. *2 Total system output from the engine and electric motors (using the battery), based on in-house measurements.